

Plus/PSS LDV Push-In Type A [1285.001]

ORDER INFORMATION

Order

When placing an order for a spare part it is necessary to provide only the order number listed in the spare parts list. Where no packing quantity is indicated this means 1 item. In the case of a spare parts set or kit (1) then this may include multiple quantities of mixed items. When a packing quantity is shown; then the minimum order quantity must correspond with the packing quantity or multiples of the packing quantity.

Examples:

1. A customer orders 1 item:
 - When entering the order the order quantity is automatically increased to 10 items (1 package).
 - Price charged: 1 package at 9.00 GBP.
2. A customer orders 3 items:
 - When entering the order the order quantity is automatically increased to 10 items (1 package).
 - For order quantity and price charged please see above example no. 1.
3. A customer orders 16 items:
 - When entering the order, the order quantity is automatically increased to 20 items (2 packages).
 - Quantity delivered 2 packages with 10 items in each.
 - Price charged: 2 packages at 9.00 GBP each; total price = 18.00 GBP.

Spare parts sets or kits

All the items contained in a spare parts set or kit must be used when carrying out a repair. Only by exchanging the complete sets can the correct functioning of the repaired device be assured.

Spare parts for authorised service stations

Items marked with a "T" in front of the order number can be obtained only by service-stations authorised exclusively through Dräger.

Export authorisation

Items marked with an "X" in front of the order number are subject to an export authorisation requirement. Legal regulations with regards to these materials must be observed.

Repair-Exchange (REX)

A repair-exchange is normally carried out only if a repairable part has been returned by the customer. Dräger will charge the new list price for the new part, if the customer's old part is not received within described period.

Prices

Unless agreed otherwise, the prices are ex works including loading at the works and do not include statutory VAT. Prices are valid at the date of print. For further information, refer to the "Standard Terms and Conditions for Goods and Services of Dräger Safety AG & Co. KGaA per June 2005". Contact the local Dräger office for details.

Plus/PSS LDV Push-In Type A [1285.001]

Plus/PSS LDV Push-In Type A



Plus/PSS LDV Push-In Type A [1285.001]

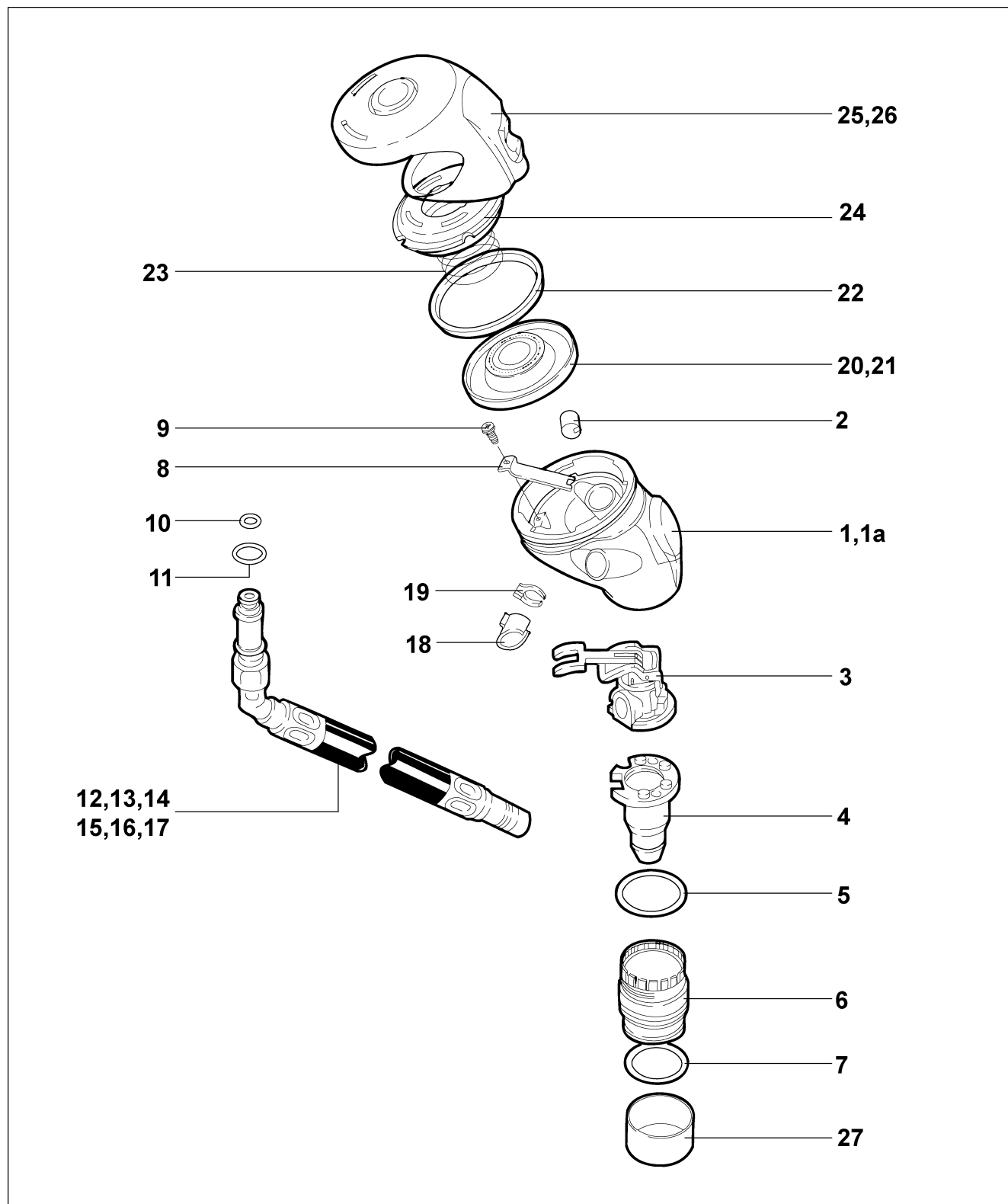
Plus/PSS LDV Push-In Type A

Item Number	Description	Order Number	Product Group	Packing Quantity	Packing Unit	End Of Repair
	Plus/PSS LDV Push-In Type A					

*Service
Only*

Plus/PSS LDV Push-In Type A [1285.001]

Plus/PSS LDV Push-In Type A



Plus/PSS LDV Push-In Type A [1285.001]

Plus/PSS LDV Push-In Type A

Item Number	Description	Order Number	Product Group	Packing Quantity	Packing Unit	End Of Repair
LDV with Male Coupling:						
1,2-12,18-20,2 2-25,27	PLUS LDV P SHORT	3338700	527	1	EA	
1,2-11,13,18-2 0,22-25,27	PLUS LDV P LONG	3338701	527	1	EA	
1,2-11,14,18-2 0,22-25,27	PLUS LDV P SHORT (JAPAN)	3350916	527	1	EA	
1,2-12,18-19,2 1-24,26,27	PLUS LDV - A SHORT (PAREL)	3338967	527	1	EA	
1a,2-12,18-20, 22-25,27	PLUS LDV SH PUSH-IN (BS8468-1:2006)	3356866	527	1	EA	
LDV Intergrated:						
1,2-11,15,18-2 0,22-25,27	PLUS LDV LONG HOSE	3351141				
1,2-11,16,18-2 0,22-25,27	LDV ASSEMBLY PLUG IN	3338702	592	1	EA	
1,2-11,16,18,1 9,21-24,26,27	LDV PLUS - FIXED 'PAREL'	3356284	527	1	EA	
1,2-11,17,18-2 0,22-25,27	SPARE. PLUS A LDV 1.5M (INTEGRATED)	3353755	592	1	EA	
1,2	LDV Body	3357093	592	1	EA	
1a,2	Body (not available)					
2	GROMMET (5)	3338750	592	5	EA	
3	AIR TRANSFER BLOCK P.P.	3350550	592	1	EA	
4	PUSH-IN LDV INJECTOR PIPE ASSY	3339683	592	1	EA	
5	O-RING	3339459	592	10	EA	
6	PUSH- IN CONNECTOR	3338927	592	1	EA	
7	O-Ring	R18352	592	5	EA	
8	RETAINING PLATE (LDV)	3350098	592	5	EA	
9	SCREW SELF TAPPING (10)	3350526	592	10	EA	
10	O-Ring (HP Seal)	3337215	592	20	EA	
11	O-RING	3339440	592	10	EA	
Hoses with Male Couplings:						
10-12	LDV HOSE ASSY	3350499	599	1	EA	
10,11,13	M.P. HOSE (LONG)	3338716	592	1	EA	
10,11,14	HOSE ASSY L.D.V.	3350915	592	1	EA	
Intergrated Hoses:						
10,11,15	LDV HOSE ASSEMBLY - SPARE	3359040	599	1	EA	

Plus/PSS LDV Push-In Type A [1285.001]**Plus/PSS LDV Push-In Type A**

Item Number	Description	Order Number	Product Group	Packing Quantity	Packing Unit	End Of Repair
10,11.16	M.P. HOSE	3338717	592	1	EA	
10,11,17	MEDIUM PRESSURE HOSE (1.5M)	3353756	592	1	EA	
18	TAIL CLIP (10)	3338737	592	10	EA	
19	TAILPIECE SPACER (10)	3338733	592	10	EA	
20	DIAPHRAGM ASSEMBLY	3338747	592	1	EA	
21	MOULDED DIAPHRAGM	3338751	592	1	EA	
22	SLIP RING	3338755	592	5	EA	
23	POSITIVE PRESSURE SPRING	3338768	592	5	EA	
24	MOULDED BAYONET CAP	3338735	592	1	EA	
25	LDV COVER	3338773	592	1	EA	
26	LDV COVER (GREEN)	3338799	592	1	EA	
27	PROTECTIVE CAP	3351069	592	1	EA	

*Service
Only*