

Order Information concerning Spare Parts List

When placing orders for Spare Parts, please give only the order numbers listed in the spare parts list.

The order number can refer to 1 piece or 1 repair set, (multiple quantity).

The minimum order quantity for each order number must correspond with the packed quantity or multiples of the packing quantity.

Examples:

1. A customer orders 10 pieces

Quantity delivered 1 package with 10 pieces V04711

Price charged 10 * V04711 at 0,90 EUR each, total price = 9,00 EUR
(minimum price)

2. A customer orders 3 pieces

When booking the order in the EDP, the order quantity is automatically increased to 10 pieces.

Order quantity and price charged, see para. 1.

3. A customer orders 16 pieces

When booking the order, the order quantity is automatically increased to the next higher packing quantity - 20 pieces.

Quantity delivered 2 packages with 10 * V04711 each

Price charged 20 * V04711 at 0,90 EUR each, total price = 18,-- EUR

A repair-exchange (RE) is normally only carried out, if a repairable part has been returned by the customer. At customer's request Dräger however, Dräger will charge the list price for the new part if customer's old part is not received within a period of 3 calendar weeks.

Information concerning the handling of spare parts sets in case of repair:

For technical reasons, it is always necessary to exchange complete sets. Only in this way, the correct functioning of the repaired device can be ensured.

Internal: Spare parts list for technician

Dräger Service
Safety

Subject to change without notice

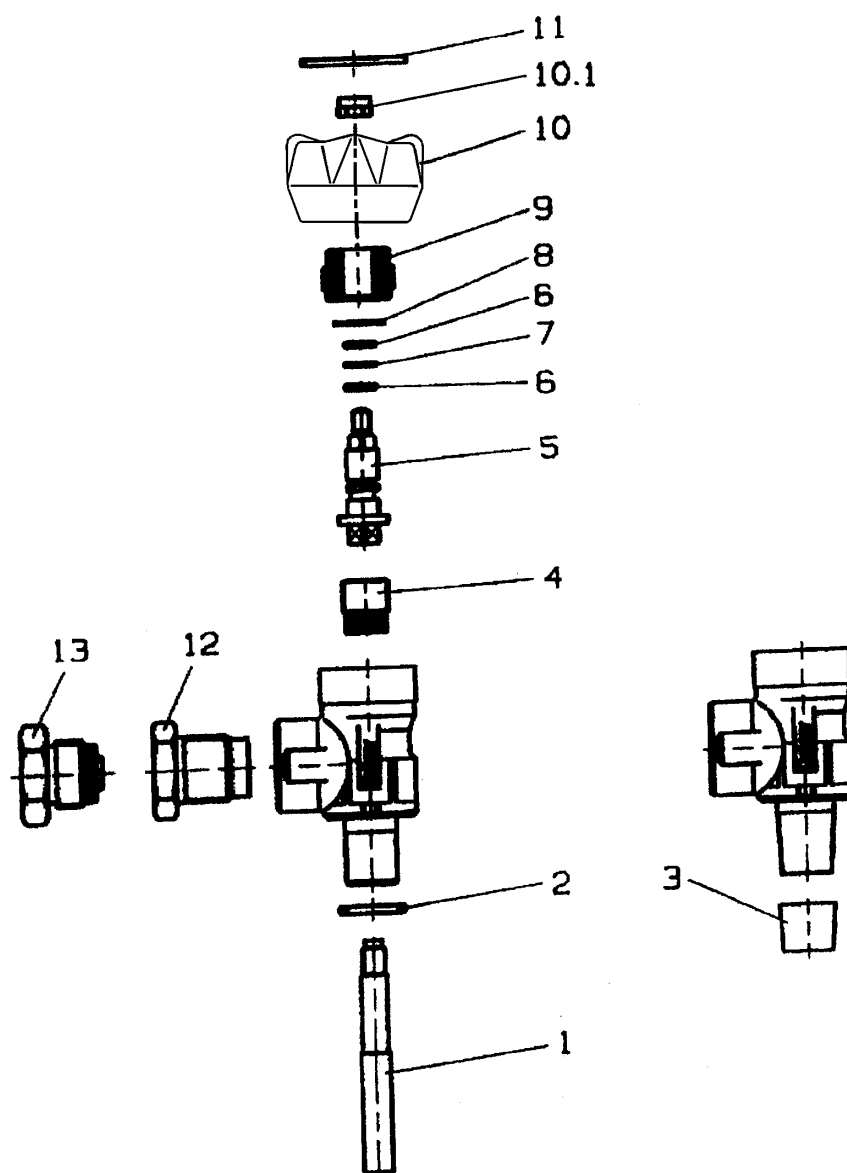
Spare Part List
GAS CYLINDER VALVES

Edition date
06.08.2002

Spare Part List
1260.253

V11110, V11130, V11265, V11270

Page: 1
Image: 1



Internal: Spare parts list for technician

Dräger Service
Safety

Subject to change without n

Spare Part List
GAS CYLINDER VALVES

Edition date
06.08.2002

Spare Part List
1260.253

V11110, V11130, V11265, V11270

Page: 2
Image: 1

POSITION	DESIGNATION	PART- NUMMER	ORDER CODE	PACK. QTY.
1,4-11	GAS ZYLIND.VALVE300BAR M18x1,5		V11110	
1,4-11	GAS ZYLIND.VALVE 200BAR-DIN		V11130	
1,4-11	GAS CYLINDER VALVE 300W19,8KEG		V11265	
1,4-11	GAS CYLINDER VALVE W19,8KEG200		V11270	
1	WATER PROT.TUBE W.SINTER FILT.		V11122	5
2	O-RING		V11224	10
3	SEALING CAPSULE		D04739	10
4	LOWER SPINDLE		V11123	5
5-9	KIT VALVE UPPER PARTS		V11119	
6-8	KIT WASHERS F.UPPER SPINDLE		V11118	
10,10.1,11	HANDWHEEL, TRIANGULAR CPL.		V11157	
10	* HANDRAD, FLAMMWIDRIG		V11174	
10	HANDWH.N.STRUCT.SHAPE V11157	V07371		
10.1	LOCKING NUT DIN985-A2		1333062	50
11	DISC FOR TRIANGULAR HANDWHEEL		V11156	10
11	DISC (DIAMETER 33,5 MM)	V07362		10
12	CLOSING SCREW,CPL 300 BAR G5/8		V06567	2
12.1	SEALING RING 300		V10967	10
13	CLOSING SCREW,CPL 200 BAR G5/8		V05501	5
13.1	PACKING RING		D04742	10